

Addenda and Errata

for

Ciegler, J. C. 2000. Ground beetles and wrinkled bark beetles of South Carolina (Coleoptera: Geadephaga: Carabidae and Rhysodidae). Biota of South Carolina. Vol. 1. Clemson University, Clemson, S. C.

Janet C. Ciegler

February 2003

Page 10, substitute for couplet 36:

- 36(27) Body pedunculate (Figs. 33, 34): anterior part of mesothorax, with extreme base of elytron, clearly constricted to a neck (peduncle) on which scutellum is situated (concealed under pronotum in two genera). 36b
Body not pedunculate, or, if slightly so, apex of scutellum (rarely concealed under pronotum) extends to level of humeri and usually intrudes upon elytral suture. 44

- 36b(36) Antennomeres 6-11 white, antennomeres 1-5 more or less piceous; middle coxal cavities closed by sterna. *Eucaerus*, p. 116
Antennomeres 6-11 not paler than 1-5; middle coxal cavities open, mesepimera extended to coxal cavities. 37

Page 18, couplet 106, option 2, change:

if narrow gap in middle, then antennomeres 4-11 pubescent

to:

if narrow gap in middle, then antennomeres 4-11 pubescent or hind angles of pronotum nearly rectangular

Page 35, substitute for couplet 17:

- 17(15) Elytral costae glabrous on disk, intervals with short setae; mesepimera infuscated in most specimens; aedeagus of male with ventral ridge *B. quadripennis* Dejean (in part)
Elytral costae and intervals with short setae; mesepimera ferruginous; aedeagus without ventral ridge. *B. oxygonus* Chaudoir

Page 36, column 1, add after description of *Brachinus quadripennis*:

Shiloh. June. At UV light. New state record: JCC.

Page 44, column 2, below *Trechus hydropicus*, change:
Sassafras Mountain. Aug.

to:

Reported from South Carolina by Bousquet and Laroche (1993).

Page 45, column 1, paragraph 1, line 4, add:

Choate & Choate (1995).

Page 45, substitute for couplet 12:

- 12(11) All elytral striae complete (outer ones finer toward apex or not). 12b
Outer striae obsolete (or at least not quite continuous) before apex. 13

- 12b(12) Elytra with common rufous spot in apical third; pronotum with hind angles rectangular, basal foveae indistinct. . . *B. rufotinctum* (Chaudoir)
Elytra without spot; pronotum with hind angles obtuse, basal foveae markedly impressed *B. chalceum* Dejean

Page 48, insert before "*Bembidion semistriatum*":

Bembidion rufotinctum (Chaudoir, 1868)

Bembidium blanchardi Hayward 1897

5.00-5.75 mm. Black with bronze tinge; head and pronotum greenish; elytra with common pale rufous spot on apical third. Pronotum with sides parallel anterior to hind angles; hind angles sharp, rectangular or slightly acute, without any trace of laterobasal carinae. Elytral striae complete and markedly punctate. Fully winged. Resembles *B. chalceum* but smaller, flatter, and narrower, and with shorter pronotum.

Long Creek. June. Flushed from alga-encrusted rocks in middle of river. New state record: Choate & Choate.

Page 49, column 1, add after description of *Bembidion viridicolle*:

Ravenal. Sept. On mud. New state record: JCC.

Page 53, column 1, add after description of *Tachys litoralis*:

Moncks Corner. Sept. At UV light. New state record: JCC.

Page 53, substitute for couplet 2:

2(1) Piceous or nearly black; larger, 3.00-3.25 mm, elytra nearly oval. *P. albipes*

(LeConte)

Head and pronotum piceous or rufopiceous, elytra testaceous or rufotestaceous, most specimens with an indistinct dusky cloud posterior to

middle (Fig. 128); smaller, 2.6-3.1 mm, elytra elongate 2b

2b(2) Eyes small and flat; pronotum with sides clearly sinuate behind and hind angles nearly

rectangular *P. rhodeanus* (Casey)

Eyes large, almost hemispherical; pronotum with less protruded hind angles, sides not or barely sinuate

. *P. proximus* (Say)

Page 54, insert before *Paratachys scitulus*:

Paratachys rhodeanus (Casey, 1918)

Tachys rhodeanus Casey, 1918

2.8-3.0 mm. Resembles *P. proximus* and *P. scitulus* in size and color, but is distinguished by narrower head, flatter eyes, pronotal sides clearly sinuate anterior to nearly rectangular hind angles, and pronotum more nearly cordiform. Rufotestaceous, head and pronotum a little darker in some specimens; elytra with central piceous cloud not extended to side margins; appendages testaceous, distal antennomeres more or less infuscated. Male with tarsomeres 1-2 dilated.

Charlotte (Mecklenburg Co.), North Carolina. May. At lights.

Page 57, substitute for couplet 5:

5(4) Pronotum dull on discal area. 5b
Pronotum entirely shiny. 7

5b(5) Basal and lateral margins of pronotum deplanate; length >8 mm. *L. agilis* (Dejean) in part
Pronotum not deplanate; length <7.5 mm. 6

Page 58, substitute for couplet 7:

7(5) Elytral striae wider; length 10-12 mm
. *L. rectus* (Say) (in part)
Elytral striae narrow; length <10 mm.

7b

7b(7) Length 8.0-9.8 mm. *L. agilis* (Dejean) (in part)
Length 5.0-7.5 mm. 8

Page 59, insert before *Loxandrus brevicollis*:

Loxandrus agilis (Dejean, 1828)

8.0-9.8 mm. Black, shiny, elytra iridescent; ventral surface black to dark brown; appendages dark to reddish brown. Pronotum with lateral margins evenly rounded, not sinuate; hind angles rounded; basal impressions elongate, shallow, punctate or not; area between impressions punctate. Elytral striae distinct; humeri rounded. Ventral surface completely impunctate.

Ravenal. May. At UV light. New state record: JCC.

Page 69, couplet 7, option 2, change:

Length <= 9.0 mm. 9

to:

Length >= 9.0 mm. 10

Delete couplet 9(7).

Change number on couplet:

10(9)

to:

10(7)

Page 70, columns 1-2, delete entire discussion of

Cyclotrachelus incisus.

Page 77, column 2, in description of *Anatrichis minuta*, change lines 7-8 to read:

Interval 9 extended inside humerus to the level of stria 6, and extended apically to stria 2 as a thick and prominent ridge.

Page 82, column 2, in description of *Licinini*, lines 7-8, change:

. .and one setigerous puncture at the hind angle of the pronotum;

to:

. .and one or more setigerous punctures on lateral margin of pronotum;

Page 84, column 1, in description of *Dicaelus dilatatus*, line 5, change:

about two-thirds length of elytron

to:

about one-third length of elytron

Page 97, column 2, paragraph 1, line 3, change:

Discal setigerous punctures three.

to:

Discal setigerous punctures three or four.

Page 97, column 2, in description of *Acupalpus rectangulus*, lines 7-8, change:

. .and at least four discal setigerous punctures close to stria 2.

to:

. . and four to six discal setigerous punctures close to stria 2.

Page 112, column 2, under *Agonum nutans*, change:

Clemson, Seabrook Island. Mar., May.

to:

Delaware, Florida, and one possible record from Seabrook Island in May (Kirk, 1970).

Page 116, insert before “Genus *Euphorticus*”:

Genus *Eucaerus* LeConte, 1853

This genus differs from *Euphorticus* and *Calybe* in the elytra being iridescent, the elytra glabrous except for the usual dorsal setae, and the color of antennae. Twelve species are known, the other eleven being tropical. Additional references: Horn (1881), Ball & Bousquet (2001).

Eucaerus varicornis LeConte, 1853 Fig. 214b

3.0-3.5 mm. Elytra iridescent, glabrous. Head black, pronotum and legs orange, elytra piceous, antennomeres 1-5 piceous, 6-11 white. Antennomeres 3-11 pubescent. Terminal palpomeres of all palpi fusiform, apex membranous and subulate, surface pubescent.

Virginia, Georgia. Margins of sunlit marshes and dark swamp forests; in leaf litter; in pitfall trap.

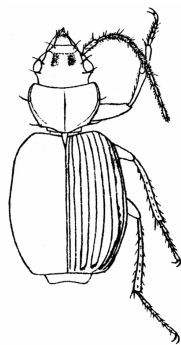


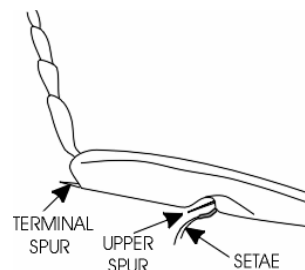
Figure 214b. Habitus of *Eucaerus varicornis*, dorsal aspect (reproduced from Horn, 1881).

Page 118, column 2, paragraph 1, line 3, change:
inner wings are vestigial.

to:

inner wings of some species are vestigial.

Page 122, substitute for Figure 218:



Page 136, add to Literature Cited:

Ball, G. E., and Y. Bousquet. 2001. Carabidae, pp. 32-132
In Arnett, R. H., Jr., and M. C. Thomas, eds. 2001.
American beetles. Volume 1. Archostemata,
Myxophaga, Adephaga, Polyphaga: Staphyliniformia.
CRC Press, N. Y.

Choate, P. M., and A. L. Choate. 1995. Additions to the
known range of *Bembidion rufotinctum* Chaudoir
(Coleoptera: Carabidae: Bembidiini). *Insecta Mundi*
9:371-371.

Horn, G. H. 1881. On the genera of Carabidae with special
reference to the fauna of Boreal America. *Transactions*
of the American Entomological Society 9:91-196,
plates 1-10.

Page 140, add to New State Records:

Bembidion rufotinctum (Chaudoir, 1868)

Bembidion viridicolle (LaFerté-Sénéctère, 1841)

Brachinus quadripennis Dejean, 1825

Loxandrus agilis (Dejean, 1828)

Tachys litoralis Casey, 1884