

Progressive Symptoms of Methyl Parathion Exposure

Summary of Methyl Parathion Symptoms

"MUDDLES": Miosis, Urination, Diarrhea, Diaphoresis, Lacrimation, Excitation, and Salivation,

Anxiety, Restlessness,
Confusion, Agitation

Lethargy

Diaphoresis

Muscle Twitching,
Weakness, Incoordination

Convulsions, Coma

Headache

Blurred Vision,
Pupil Constriction (Miosis),
Blurred or Dark Vision,
Tearing (Lacrimation)

Rhinitis

Excessive Salivation

Cough

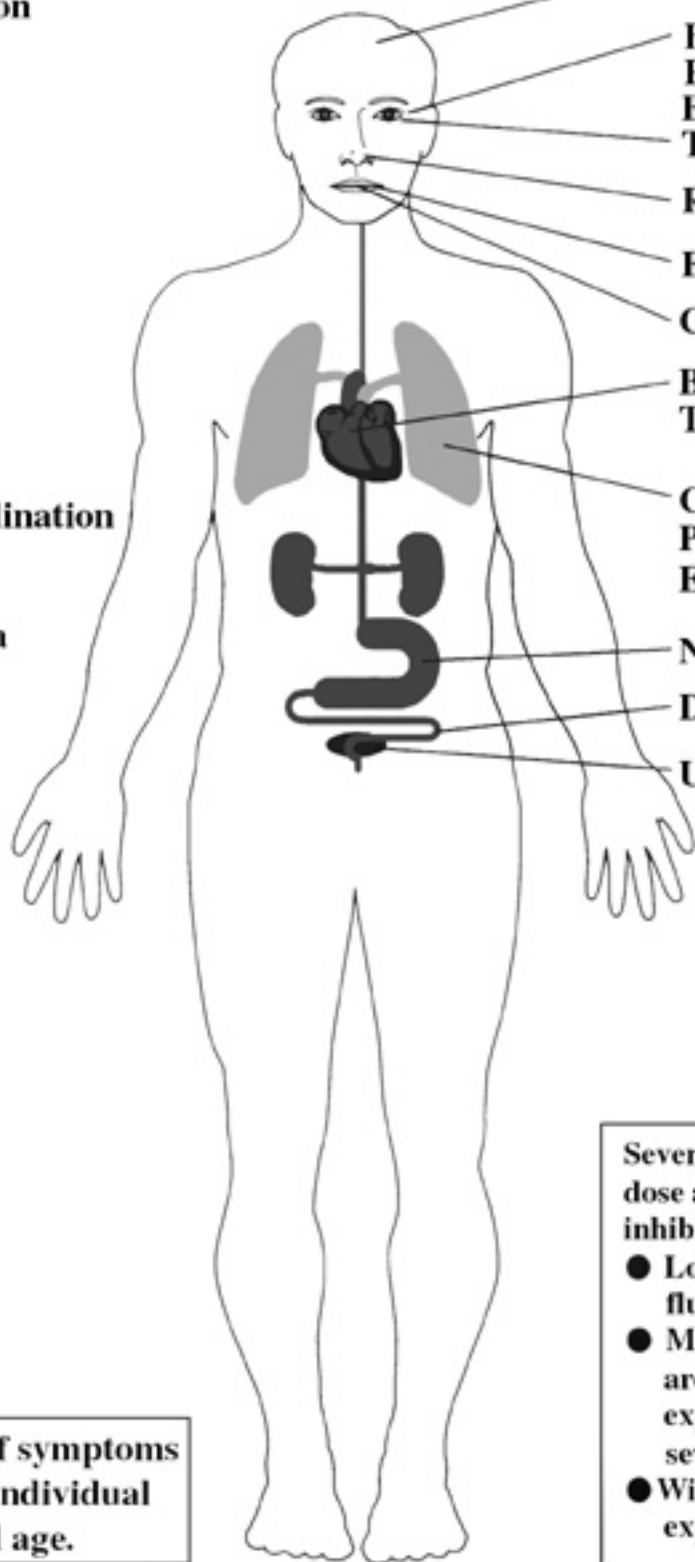
Bradycardia, Hypotension
Tachycardia, Hypertension

Chest Tightness, Wheezing,
Productive Cough, Pulmonary
Edema, Respiratory Arrest

Nausea, Vomiting

Diarrhea

Urinary Incontinence



Note: Presence of symptoms is dependent on individual health status and age.

Severity of symptoms is related to dose and level of acetylcholinesterase inhibition.

- Low-dose symptoms are typically flu-like nature.
- Moderate- to high-dose symptoms are more indicative of acute exposure and progression in severity of symptoms.
- Without intervention, acute exposure can result in death.